



Merridale Road | | Wolverhampton | WV3 9SB

£700

Jackson
LILE & CLOSE

Key features

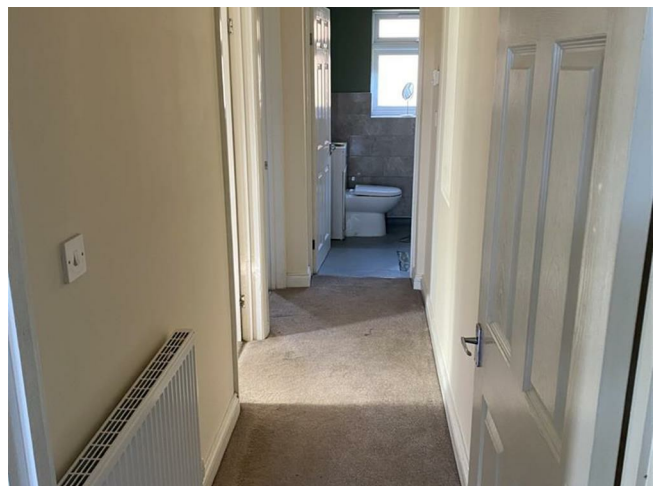
- 2 cosy bedrooms
- 1 modern bathroom
- Spacious reception room
- Flat - conversion style
- Located in Wolverhampton
- Close to local amenities
- Easy access to transport
- Viewing recommended

Description

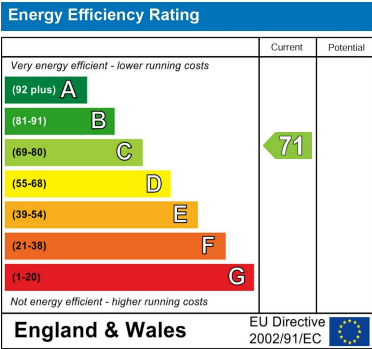
.



Directions







12 and 13 King Street
Wolverhampton
West Midlands
WV1 1ST
01902 712812
jacksonlileclose@btconnect.com
<https://www.jacksonlileandclose.co.uk/#/>